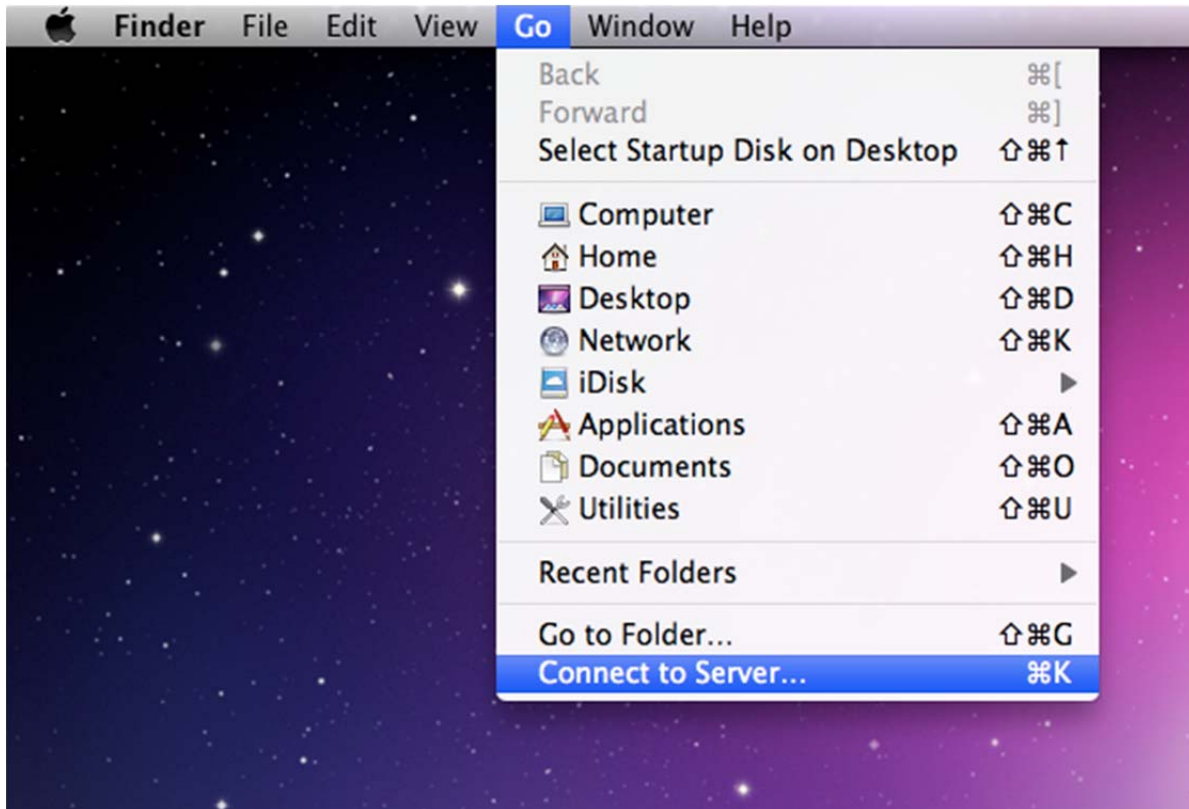


Mac OS X Map a Network Drive

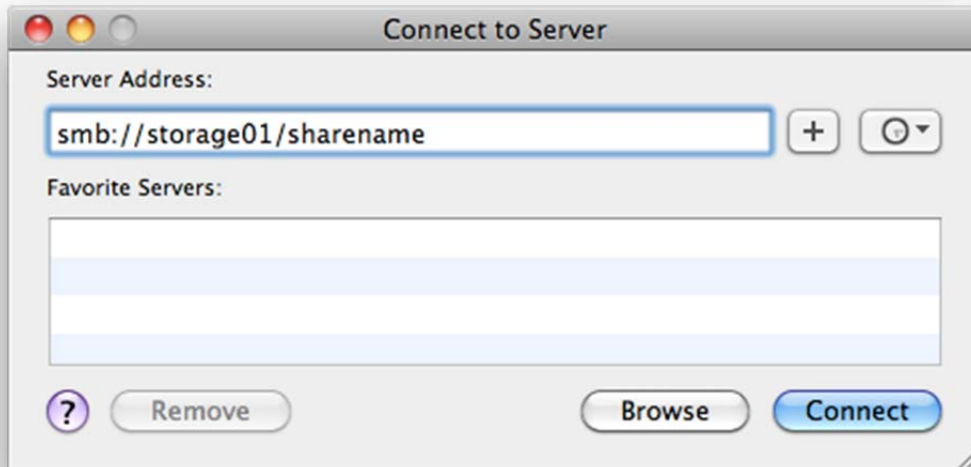
Step 1 - Open Map Dialogue

- Select **Finder**
- Open the **Go** menu and select **Connect to Server**



Step 2 - Enter the Drive Name

- Type `smb://server_name.win.ad.jhu.edu/sharename` into the **Server Address** field, where *share* is the name of the folder you are trying to connect to.
 - **NOTE:** You **MUST** replace the word *sharename* with the share you're trying to map (eg. public, ms, your username).
 - Clicking the + button will add the share to your favorite servers list for easy access in the future.
- Click **Connect** to connect to the share. The connection will then prompt you for your credentials.



Step 3 - Enter Campus Domain Account Information

- Type *WIN* into the **Workgroup or Domain** field.
- Type your JHED username into the **Name** field.
- Type your JHED Password into the **Password** field.
- After clicking **OK** you can access the mapped drive from your desktop, as seen below.



- After clicking **OK** you can access the mapped drive from your desktop, as seen below.



- After clicking **OK** you can also access the mapped drive using the **Finder** application, as seen below.

